

QUICK START

The Advantage •••••

WARNING!

VERIFY THAT ALL PACKING MATERIALS HAVE BEEN REMOVED BEFORE APPLYING POWER TO THE ADVANTAGE.



TABLE OF CONTENTS

SAFETY	3
TRAINING OPTIONS	3
FACTORY TRAINING	3
ADDITIONAL TRAINING	3
CONTACT US	3
DISCLAIMER	3
PART IDENTIFICATION	4
PACKING MATERIAL IDENTIFICATION	5
ADVANTAGE SET-UP	6
REMOVE PACKING MATERIAL	6
<i>Load Chamber - Spindle Installation</i>	6
<i>Unload Chamber - Spindle Installation</i>	6
DISC SEPARATOR SPINDLE (DSS) / LOAD-SIDE	6
SPINDLE ASSEMBLY AND INSTALLATION	7
PREPARE THE WATER TANK	7
PREPARE THE WATER PITCHER	8
PREPARE THE POLISH RESERVOIR AND REACTION CHAMBER	8
ATTACH THE POLISH PADS	9
INITIALIZE THE ADVANTAGE	10
PRIME WATER AND POLISH HOSES	11

SAFETY

Safety is the highest priority in the Azuradisc product line, and we have achieved safe designs with user-friendly interfaces through extensive research and maximized use of technology for all of our machines. It is the operator's responsibility to be familiar with the operation of the machine and routinely follow the maintenance instructions provided in this manual.

WARNING: The Machine must be turned OFF for maintenance. Unless otherwise stated in this manual, all product maintenance instructions MUST be performed with the machine turned OFF and the power lead removed from the rear socket.

When using the Advantage disc repair machine, the following basic safety precautions should always be followed to reduce the risk of fire, electric shock, and/or injury to persons:

- Read this manual before assembling or using the machine.
- Use this machine only for its intended use as described in this manual.
- Use only with Azuradisc recommended accessories and repair materials. (The use of repair materials not evaluated for use with this machine may damage discs permanently, cause injuries, and/or void the warranty.)
- This machine is not intended for use by children or unauthorized persons.
- Do not operate this machine if it has a damaged cord or plug, is not working properly, has been damaged, or immersed in water. Return the machine to Azuradisc or authorized technician for examination, repair, or adjustment.
- To disconnect, turn off the machine, then remove plug from the electrical outlet.
- When using an extension cord, use a grounded plug or socket to connect the machine.
- Disconnect electrical supply before cleaning.

TRAINING OPTIONS

FACTORY TRAINING

Training sessions may be scheduled with a Factory Direct Representative by calling the Corporate Headquarters Tech Services Department in the United States of America at 1.480.827.8786. For participation and availability outside of the United States, please contact your local distributor.

ADDITIONAL TRAINING

Contact the local sales representative or distributor for participation pricing and availability of additional training options.

CONTACT US

Corporate Headquarters:

United States of America
Azuradisc Corporate Headquarters
7307 South 89th Place
Mesa, Arizona 85212
www.azuradisc.com
Technical Support: 1.480.827.8786
Sales Inquires: 1.800.933.4923
Email: support@azuradisc.com

DISCLAIMER

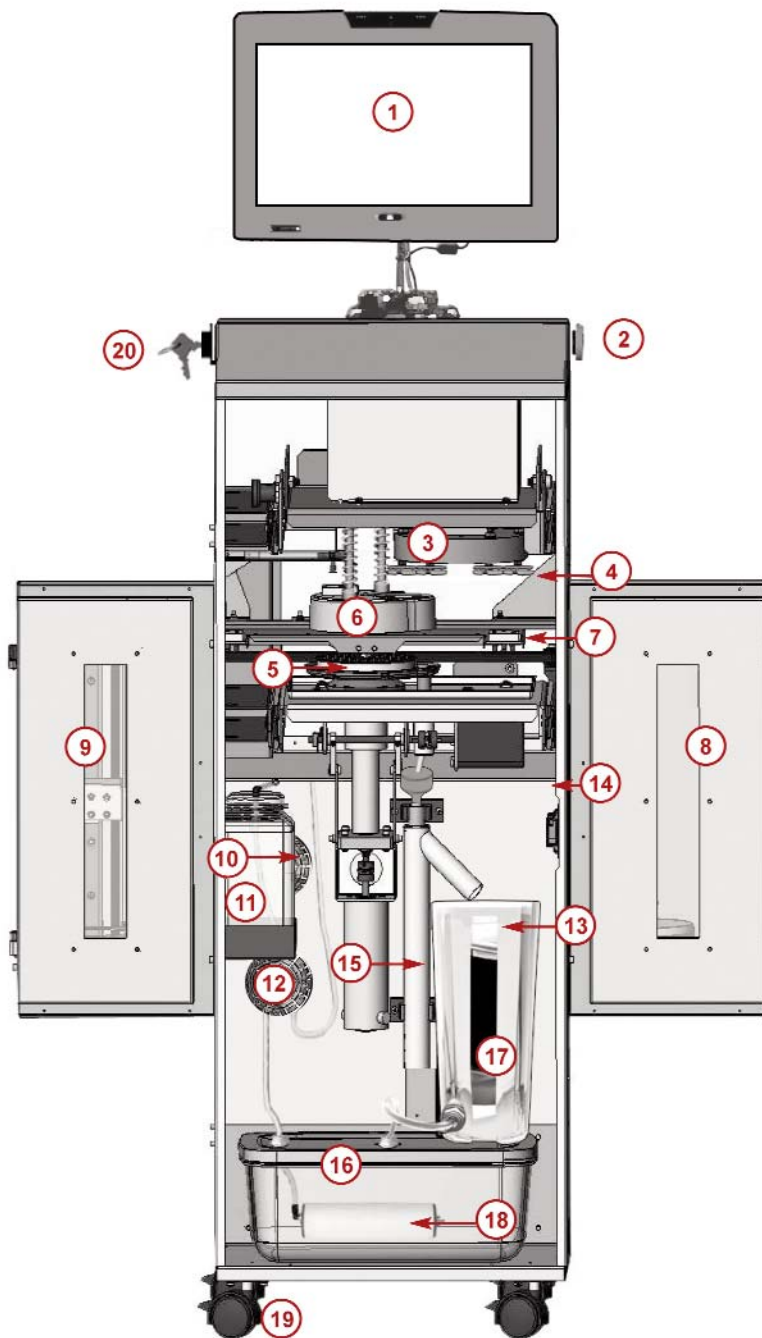
© 2012 Azuradisc®. All rights reserved. Printed in the U.S.A.

DISCLAIMER: This document provides information about the Azuradisc Advantage disc repair machine. All software included with the Advantage is furnished under license and may not be used or copied except in accordance with the terms of the Software License Agreement herein. Except as permitted by licensing. No part of this document may be reproduced, stored in a retrieval system, or transmitted, in any form or by any means, electronic, mechanical, recording, or otherwise, without the express prior written permission of Azuradisc Incorporated. The examples provided in this document are solely for illustrative purposes and may need to be modified to assure proper functioning on actual repair machine(s). Azuradisc assumes no liability for damages incurred directly or indirectly from errors or omissions contained in this document, or discrepancies between the product and this document. The content of this document is subject to change without notice.

All other product names or logos mentioned herein are the property of their respective companies. Reference herein to any specific commercial firm, commercial product, process, or service by trade name, trademark, manufacturer, or otherwise, does not constitute or imply its endorsement, recommendation, or favoring by Azuradisc or the individual employees of Azuradisc. For additional information, visit www.azuradisc.com.

THE ADVANTAGE PART IDENTIFICATION

- ① Operator Interface Touchscreen (OIT)
- ② On/Off Button
- ③ Turret
- ④ Polish Head With Pads
- ⑤ Disc Turntable
- ⑥ Splash Guard
- ⑦ Disc Transfer Arm
- ⑧ Unload Chamber (With Spindle Inside)
- ⑨ Load Chamber (With Spindle Inside)
- ⑩ Polish Pump
- ⑪ Polish Reservoir
- ⑫ Water Pump
- ⑬ Filters 1 & 2 (Inside Water Pitcher)
- ⑭ Serial Number Label (Inside Cabinet)
- ⑮ Water Recirculation System
- ⑯ Water Tank
- ⑰ Water Pitcher
- ⑱ Filter 3 (Inside Water Tank)
- ⑲ Caster Locks



THE ADVANTAGE PACKING MATERIALS IDENTIFICATION

- ① Crate
- ② Blue Protector Bag
- ③ Protective Foam
- ④ Manuals
- ⑤ Caution Labels
- ⑥ Tool Kit
- ⑦ Starter Kit:
 - Polish Compound
 - Micro-Abrasive Pads
 - A&B Solution
- ⑧ Poster



LOAD SIDE - Disc Separator Spindle (DSS)

Please Read Below Notice Prior to Initial Operation

DSS units shipped with a new machine have been factory calibrated for that particular repair machine, and further calibration should not be necessary. If you have received a separate DSS, please refer to the calibration instructions below to ensure optimum function in your disc repair machine.

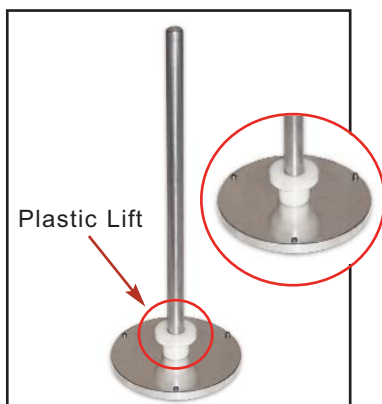
Azuradisc has designed a spindle specifically for use on the load side of The Advantage Disc Repair Machines to reduce the possibility of the machine picking up more than one disc at a time. This condition can occur if the stacked discs adhere to one another for any number of reasons. Discs can get stuck together because of soda, static cling, because they are damp and many other reasons. This new & improved design is called the Disc Spindle Separator (DSS), it is designed to help separate lightly stuck together discs, however is not designed to pry apart discs that are seriously stuck together.

LOAD SPINDLE ASSEMBLY

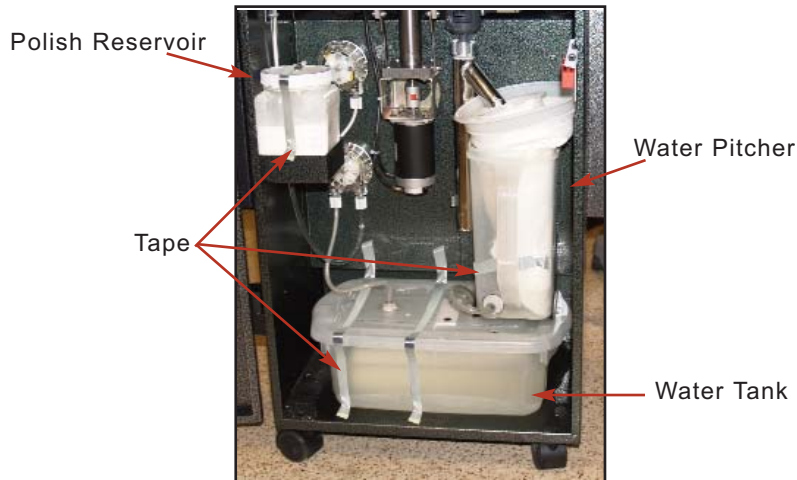


The Disc Spindle Separator is made up of four pieces:

- Spindle base with adjustable set screws
- Spindle shaft
- Plastic lift ring
- DSS Spindle Nut

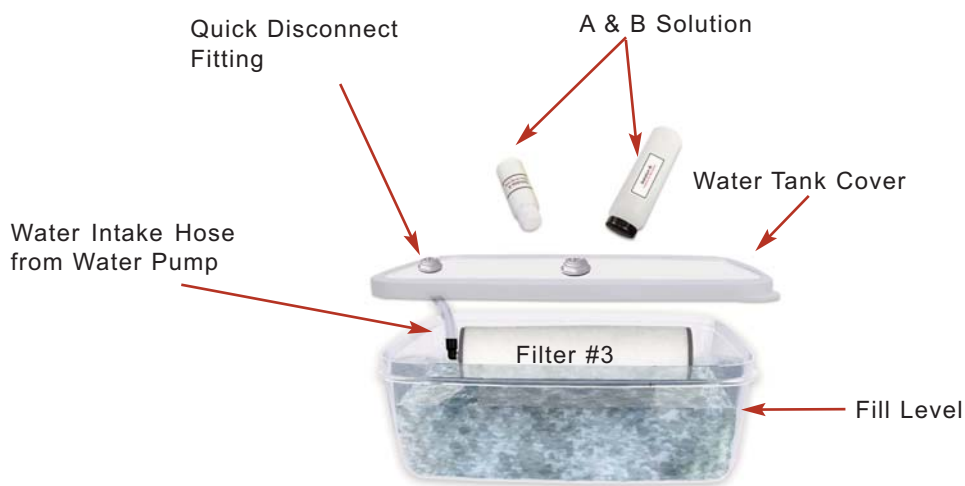


IMPORTANT: Make sure the plastic lift ring has been installed on the spindle shaft as illustrated in the figure to the left. The larger end of the ring should be towards the spindle top.



5. Remove the packing tape from the Polish Reservoir, Water Tank and Water Pitcher.

PREPARE WATER TANK



6. Fill water tank with 1 Gallon of clean filtered water and add 1 entire bottle of each Solution A & B or until Filter 3 is fully covered.

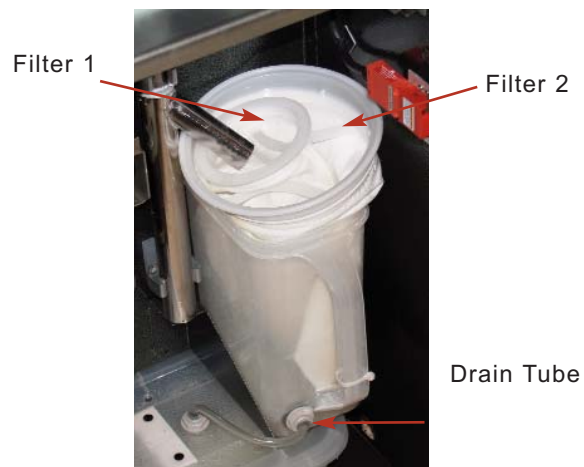
NOTE: Gently stir the solution and water mixture to prevent undesirable repair marks on discs.



7. Verify the Water Intake hose is connected to Filter #3 and replace cover.



8. Place Water Tank in the bottom of the Advantage and verify the Water Intake Hose is secure in the quick disconnect fitting.

PREPARE WATER PITCHER

9. Verify that Filter 1 is inside Filter 2 and both filters are in the Water Pitcher.



10. Verify the Drain Tube is secure in the Water Tank Cover quick disconnect fitting.

PREPARE POLISH RESERVOIR AND REACTION CHAMBER

11. Fill the Polish Reservoir and place in the holding tray.

Retaining Clips



Drain Tube Adaptor

Reaction Chamber
(Aluminum Coagulation Tube)



Align over Filter #1

12. Verify the Reaction Chamber is in the retaining clips, the Chamber exit is over Filter #1, and the drain tube adaptor is inserted into the top of the Aluminum Coagulation Tube with opening of drain tube adaptor facing forward.

ATTACH POLISH PADS



13. Lift both Release Tabs and pull out the Polishing Pad Turret Drawer.



14. Pull drawer out. Pull knob on left side of drawer out. While holding knob out, slowly lift drawer up and rotate back. Release knob into place.



15. Ensure that the turret drawer knob is locked in place.



16. Place pads on heads according to velcro color code. Ensure the pads are centered on the heads.



Incorrect



Correct

17. Press pads firmly in place.
18. Pull drawer knob and flip the Turret back over.

NOTE: If the Turret Drawer is pulled completely forward, then you must lift the side latches to push Turret Drawer back in.



Side Latch (Both sides of drawers)

19. Lift side latches simultaneously and gently push until drawer moves. Then, grab the center of the drawer and push it into place until it locks. Ensure the drawer cannot be pulled back out.

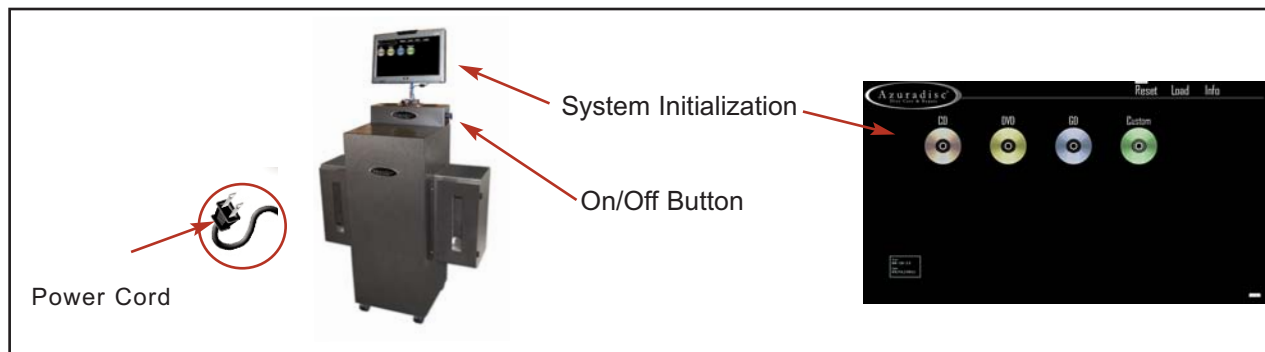
20. Push tabs down to ensure the drawer is locked in place.

21. Verify the machine is located on a stable level surface and the casters are locked to prevent it from rolling around.

NOTE: Refer to “Replacing Polish Pads” section of this manual if polish pads need to be removed for any reason.

INITIALIZE THE ADVANTAGE

WARNING: Verify that all packing materials have been removed before applying power to the machine.



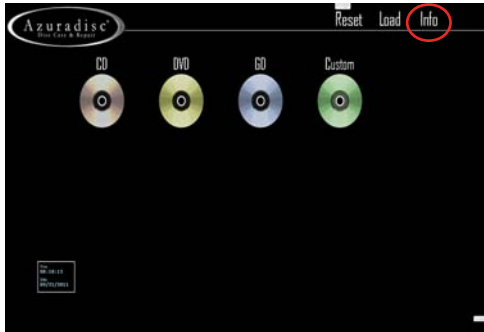
22. Plug the machine into a correct electrical source.

23. Press the On/Off button to turn on.

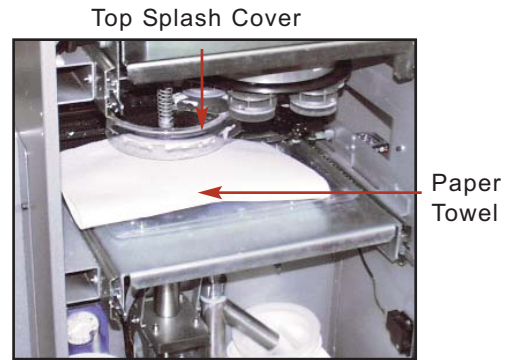
24. Allow the software to initialize.

NOTE: The water and polish hoses must be primed prior to using for the first time.

PRIME WATER AND POLISH HOSES



24. Select: Info on the OIT Main Menu.



25. Place a cloth / paper towel or Prime Cup on the turntable (under the upper splash housing) to collect polish during hose priming.



26. Select: Water / Polish Prime.



27. Run the Water Pump until all air bubbles are gone from the water hoses. Press OFF.



28. Run the Polish Pump until all air bubbles are gone from the polish hoses. Press OFF.