

OPERATION & TROUBLESHOOTING

The Advantage •••••

WARNING!

VERIFY THAT ALL PACKING MATERIALS HAVE BEEN REMOVED BEFORE APPLYING POWER TO THE ADVANTAGE.

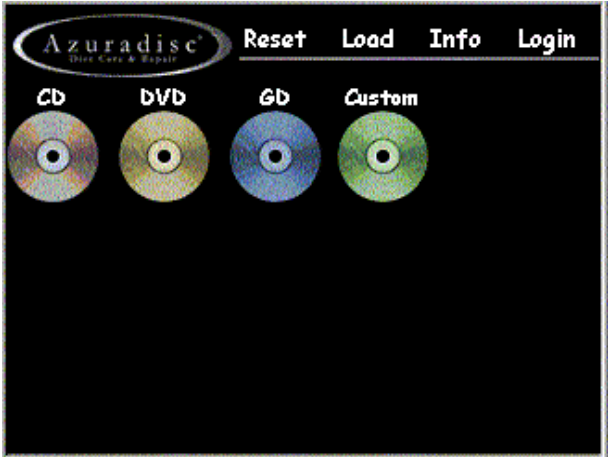


TABLE OF CONTENTS

| | |
|----------------------------------|----|
| SAFETY | 3 |
| TRAINING OPTIONS | 3 |
| FACTORY TRAINING | 3 |
| ADDITIONAL TRAINING | 3 |
| CONTACT US | 3 |
| DISCLAIMER | 3 |
| PART IDENTIFICATION | 4 |
| PRE-OPERATION CHECK | 5 |
| NORMAL OPERATION | 5 |
| MAIN MENU SCREEN | 5 |
| CD & DVD Menus | 6 |
| Clean / Repair Menu | 6 |
| GAME DISC SCREENS | 7 |
| Game Disc Screen 1 | 7 |
| Game Disc Screen 2 | 7 |
| INFO MENU | 8 |
| ADVANCED OPERATIONS | 9 |
| LOGIN SCREEN | 9 |
| TECHNICIAN MODE | 10 |

SAFETY

Safety is the highest priority in the Azuradisc product line, and we have achieved safe designs with user-friendly interfaces through extensive research and maximized use of technology for all of our machines. It is the operator's responsibility to be familiar with the operation of the machine and routinely follow the maintenance instructions provided in this manual.

WARNING:

The Machine must be turned OFF for maintenance. Unless otherwise stated in this manual, all product maintenance instructions MUST be performed with the machine turned OFF and the power lead removed from the rear socket.

When using the Advantage disc repair machine, the following basic safety precautions should always be followed to reduce the risk of fire, electric shock, and/or injury to persons:

- Read this manual before assembling or using the machine.
- Use this machine only for its intended use as described in this manual.
- Use only with Azuradisc recommended accessories and repair materials. (The use of repair materials not evaluated for use with this machine may damage discs permanently, cause injuries, and/or void the warranty.)
- This machine is not intended for use by children or infirm persons.
- Do not operate this machine if it has a damaged cord or plug, is not working properly, has been damaged, or immersed in water. Return the machine to Azuradisc or authorized technician for examination, repair, or adjustment.
- To disconnect, turn off the machine, then remove plug from the electrical outlet.
- When using an extension cord, use a grounded plug or socket to connect the machine.
- Disconnect electrical supply before cleaning.

TRAINING OPTIONS

FACTORY TRAINING

Training sessions may be scheduled with a Factory Direct Representative by calling the corporate headquarters Tech Services Department in the United States of America at 1.480.827.8786. For participation and availability outside of the United States, please contact your local distributor.

ADDITIONAL TRAINING

Contact the local sales representative or distributor for participation pricing and availability of additional training options.

CONTACT US

Corporate Headquarters:

United States of America
Azuradisc Corporate Headquarters
2885 N. Nevada St. Suite #140
Chandler AZ, 85225
www.azuradisc.com
Technical Support: 1.480.827.8786
Sales Inquires: 1.800.933.4923
Email: support@azuradisc.com

Azuradisc South Pacific Headquarters New Zealand

Gateway Park, Unit 5
59 Paul Matthews Road
North Harbour, Auckland 3013
New Zealand

POSTAL ADDRESS

P.O. Box 303-352
North Harbour, Auckland 3013
New Zealand
Telephone: +64.9.414.1430
Email: newzealandinfo@azuradisc.com

Azuradisc Australia

Telephone: 1.300.360.565
Fax: 1.300.360.144
Email: australianinfo@azuradisc.com

DISCLAIMER

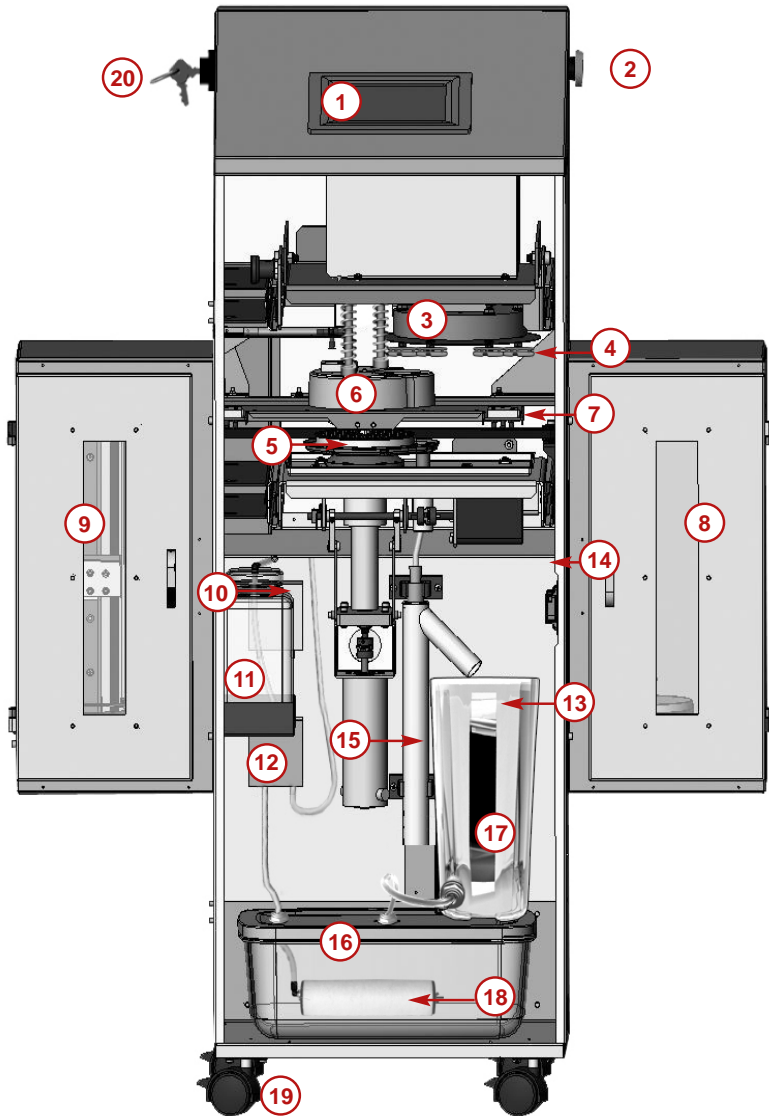
© 2003 Azuradisc®. All rights reserved. Printed in the U.S.A.

DISCLAIMER: This document provides information about the Azuradisc Advantage disc repair machine. All software included with the Advantage is furnished under license and may not be used or copied except in accordance with the terms of the Software License Agreement herein. Except as permitted by licensing. No part of this document may be reproduced, stored in a retrieval system, or transmitted, in any form or by any means, electronic, mechanical, recording, or otherwise, without the express prior written permission of Azuradisc Incorporated. The examples provided in this document are solely for illustrative purposes and may need to be modified to assure proper functioning on actual repair machine(s). Azuradisc assumes no liability for damages incurred directly or indirectly from errors or omissions contained in this document, or discrepancies between the product and this document. The content of this document is subject to change without notice.

All other product names or logos mentioned herein are the property of their respective companies. Reference herein to any specific commercial firm, commercial product, process, or service by trade name, trademark, manufacturer, or otherwise, does not constitute or imply its endorsement, recommendation, or favoring by Azuradisc or the individual employees of Azuradisc. For additional information, visit www.azuradisc.com.

THE ADVANTAGE PART IDENTIFICATION

- ① Operator Interface Touchscreen (OIT)
- ② On/Off Button
- ③ Turret
- ④ Polish Head With Pads
- ⑤ Disc Turntable
- ⑥ Splash Guard
- ⑦ Disc Transfer Arm
- ⑧ Unload Chamber (With Spindle Inside)
- ⑨ Load Chamber (With Spindle Inside)
- ⑩ Polish Pump
- ⑪ Polish Reservoir
- ⑫ Water Pump
- ⑬ Filters 1 & 2 (Inside Water Pitcher)
- ⑭ Serial Number Label (Inside Cabinet)
- ⑮ Water Recirculation System
- ⑯ Water Tank
- ⑰ Water Pitcher
- ⑱ Filter 3 (Inside Water Tank)
- ⑲ Caster Locks
- ⑳ Lock-Out/Maintenance Key



PRE-OPERATION CHECK

For optimum performance of your machine, check the following items before each use:

1. Verify the machine is located on a stable level surface and the casters are locked to prevent it from rolling around.
2. Connect the machine to a standard electrical source.
3. Polish Pads are installed on the Turret.
4. Drain from Lower Splash Guard to Reactor Chamber is clear.
5. Premixed water level is between minimum and maximum fill lines.
6. Water & Polish Tubing have no air bubbles.
7. Polish is present in the reservoir.

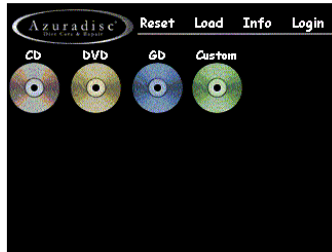
NORMAL OPERATION

NOTE:

Selecting the Azuradisc Logo will return the screen to the Main Menu from any other screen. The Stylus may be used to make selections on the OIT.

MAIN MENU SCREEN

Figure 1 - Main Menu



| Selection | Definition |
|----------------|---|
| AZURADISC LOGO | Returns to Main Screen |
| RESET | Clears all previous selections and returns all machine functions to home positions. |
| LOAD | Load discs before, during, or after the repair process. |
| INFO | Info screen to access supply levels, usage statistics, and other features. |
| LOGIN | Accesses advanced user levels and maintenance tools. |
| CD | Recipes designed for clear-type discs such as music and data discs. |
| DVD | Recipes designed for high-density and multi-layered discs such as movie discs. |
| GD | Recipes designed for different game-type discs. |
| CUSTOM | Custom recipes (currently reserved for future use). |

1. Press the On/Off Switch on the top right side of the machine and wait for it to initialize.
2. Verify the type and condition of the Polish Pads.
3. Ensure there is an adequate supply of Polish and water.
4. Sort the discs to be repaired by type (i.e. Music CDs, DVDs or Game Discs.)

NOTE:

Only one type of disc may be repaired in a session and discs must be clean and dry.

5. Discs are sorted by the type of repair or cleaning needed (i.e. gouged, scratched, clean etc.).
6. Press Load on the Operator Interface Touchscreen (OIT), open the door on the Load Chamber and place the discs on the spindle with the disc labels facing down.

NOTE:

Discs must be loaded with the labels facing down!

7. Close the Load Chamber door and select the type of disc to be repaired on the OIT.
8. Select the level of cleaning or repair required on the OIT.
9. Press Start on the OIT to begin the process.

CD & DVD MENUS

1. Sort the discs to be repaired by type (i.e. Music CDs, DVDs or Game Discs).

NOTE:

Only one type of disc may be repaired in a session and discs must be clean and dry.

2. Sort discs by the type of repair needed (i.e. gouged, deep scratches, clean etc.).
3. Press Load on the OIT, open the door on the Load Chamber and place the discs on the spindle with the disc labels facing down.

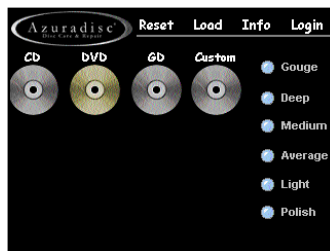
NOTE:

Discs must be loaded with the labels facing down!

4. Close the Load Chamber door and select CD or DVD on the OIT.
5. Select the level of cleaning or repair required on the OIT.
6. Press Start on the OIT to begin the process.

CLEAN - REPAIR MENU

Figure 2 - Clean/Repair - Menu



| Selection | Definition |
|-----------|---|
| GOUGE | For repairing extremely deep scratches or gouges. |
| DEEP | For repairing deeply scratched discs. |
| MEDIUM | For repairing average-depth scratched discs. |
| AVERAGE | For repairing lightly scratched discs. |
| LIGHT | For polishing lightly scuffed and scratched discs. |
| POLISH | For cleaning discs with fingerprints, dust, dirt, or oil. |

GAME DISC SCREENS

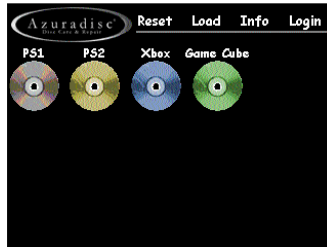
1. Sort the discs to be repaired by type (i.e. Music CDs, DVDs or Game Discs).
2. Sort discs by the type of repair needed (i.e. gouged, deep scratches, clean etc.)
3. Press Load on the Touch Screen, open the door on the Load Chamber and place the discs on the spindle with the disc labels facing down.
4. Close the Load Chamber door and select the type of game (i.e. PlayStation®1, Playstation®2, Xbox or GameCube™) on the OIT.

NOTE:

An adapter for the Disc Turntable is required for repairing or cleaning Game Cube discs.

GAME DISC SCREEN 1

Figure 3 - Game Menu #1

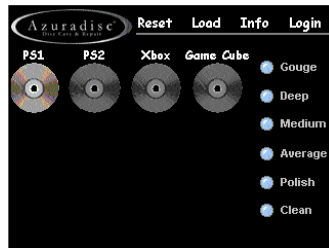


| Selection | Definition |
|-----------|---|
| PS 1 | Selects PlayStation®1 type discs. |
| PS 2 | Selects Playstation®2 type discs. |
| Xbox | Selects Xbox type discs. |
| Game Cube | Selects Game Cube® type discs (Note: Turntable Adapter Required). |

GAME DISC SCREEN 2

5. Select the level of cleaning or repair required on the Touch Screen

Figure 4 - Game Disc Menu #2



| Selection | Definition |
|-----------|---|
| GOUGE | For repairing extremely deep scratches or gouges. |
| DEEP | For repairing deeply scratched discs. |
| MEDIUM | For repairing average-depth scratched discs. |
| AVERAGE | For repairing lightly scratched discs. |
| LIGHT | For polishing lightly scuffed and scratched discs. |
| POLISH | For cleaning discs with fingerprints, dust, dirt, or oil. |

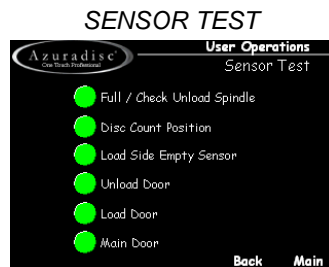
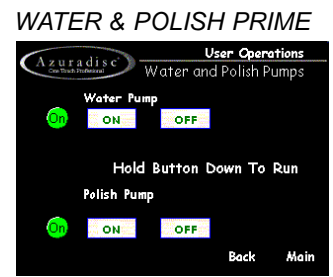
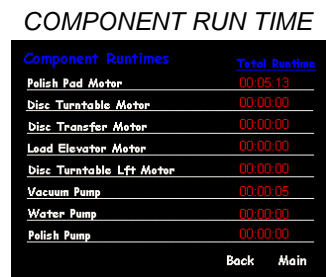
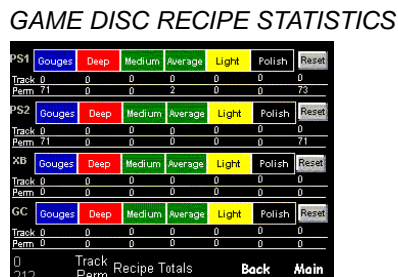
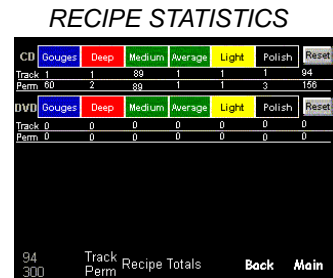
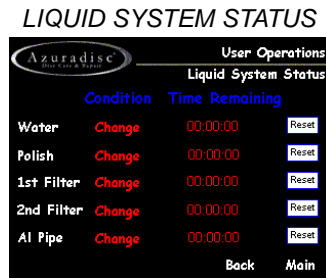
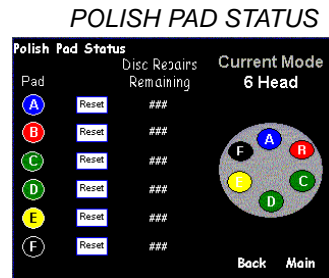
6. Press Start on the OIT to begin the process

INFO MENU

Figure 5 - Info Menu



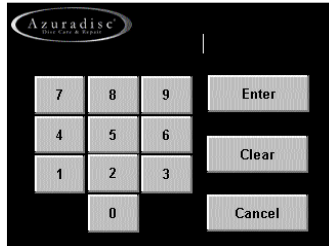
| Selection | Definition |
|-----------------------------|--|
| POLISH PAD STATUS | Allows the polish pad timers to be reset. |
| LIQUID SYSTEM STATUS | Allows the liquid system timers (water, polish, filters, and Aluminum Tube) to be reset. |
| RECIPE STATISTICS | Displays recipe statistics and tracking; allows resetting counters. |
| GAME DISC RECIPE STATISTICS | Displays recipe statistics and tracking for game discs; allows resetting counters. |
| COMPONENT RUN TIME | Tracks component run time. |
| WATER & POLISH PRIME | Allows manual operation of water and polish pumps to prime systems. |
| SENSOR TEST | Shows status of disc spindles, disc count position and door sensors. |
| MAIN | Returns to Main Menu. |



ADVANCED OPERATIONS

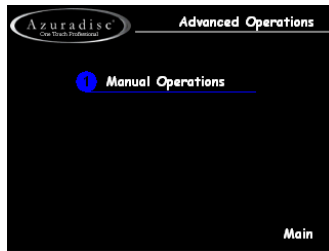
LOGIN SCREEN

Figure 6 - Login Screen

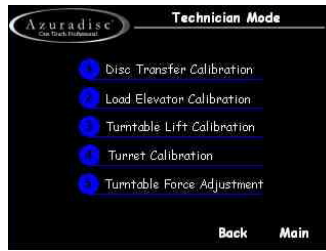


| Selection | Definition |
|--------------------|---|
| USER MODE | No password required. |
| ADVANCED OPERATION | Access additional user levels and maintenance tools (Password: 741852). |

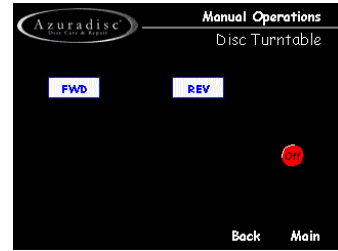
ADVANCED OPERATIONS



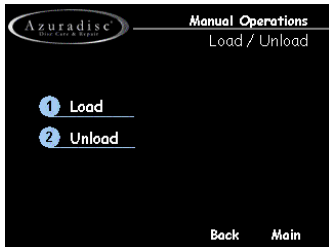
MANUAL OPERATIONS



DISC TURNTABLE



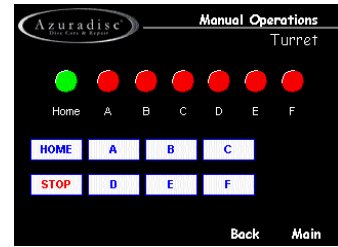
LOAD / UNLOAD



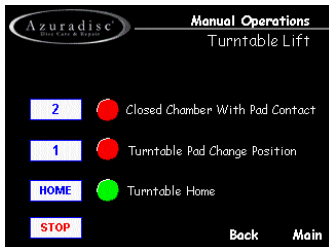
POLISH PAD MOTOR



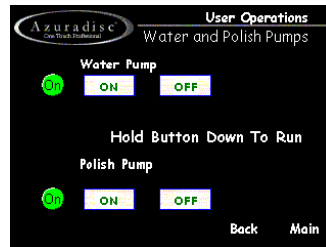
TURRET



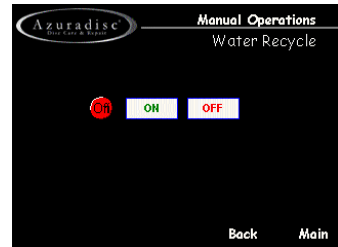
TURNTABLE LIFT



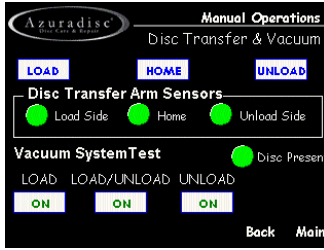
WATER & POLISH PUMPS



WATER RECYCLE

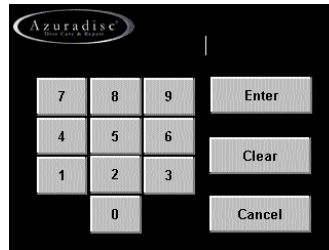


DISC TRANSFER



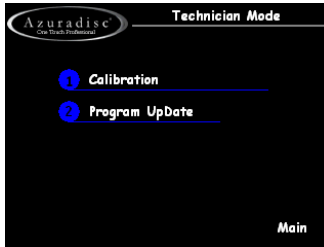
TECHNICIAN MODE

Figure 7 - Login Screen



| Selection | Definition |
|-----------------|---|
| USER MODE | No password required. |
| TECHNICIAN MODE | To be used by advanced users only (Password: 753951). |

MAIN TECHNICIAN MENU



MAIN CALIBRATION MENU



DISC TRANSFER CALIBRATION



LOAD ELEVATOR CALIBRATION



TURNTABLE LIFT CALIBRATION



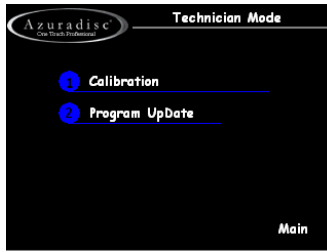
TURRET CALIBRATION



FORCE ADJUST SETUP



PROGRAM UPDATE
MAIN MENU



PROGRAM UPDATE

